



BEA securities
東亞證券

East Asia Securities Company Limited
東亞證券有限公司

SnapShot User Guide

www.easecurities.com.hk

1. Introduction	2
2. Manipulation Demonstration.....	2
2.1 “SnapShot” Panel	2
2.2 Instant price displaying	3
2.3 Real Time Indices.....	4
2.4 Closing Auction Session & Volatility Control Mechanism.....	5
2.5 Checking instant price displaying usage	8
2.6 Quota exceeds free limit.....	10
3. Chart.....	12
3.1 Functions in the stock chart.....	13
4. Company Profile	15
5. Profit Loss	16
6. Balance Sheet	17
7. Financial Ratios	18
8. Corporate Information	19
9. Cash Flow	20

1. Introduction

- “SnapShot” is an easy-to-use stock price displaying tool. The contents include: Day High, Day Low, Open, Previous Close, Nominal, Change, Percentage Change, IEP/IEV, Volume, Turnover, Lot Size, Price Spread, Market Capital, 52 Week Range, P/E, Yield, etc.
- The stock price and related stock information will be captured at the moment and remain static. User has to click "Search" to refresh the page for obtaining the updated stock information when necessary.

2. Manipulation Demonstration

2.1 “SnapShot” Panel

The following screen will be displayed after login

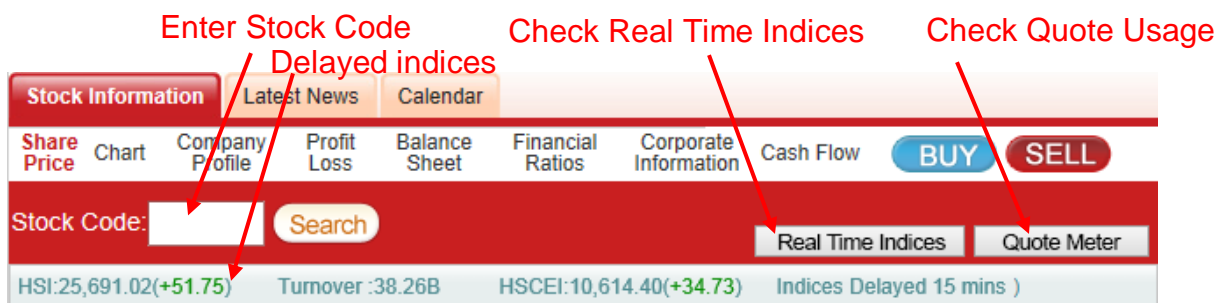


Figure 2.1.1 – Price displaying panel

Users can get the stock price and related stock information by entering stock code in the space provided and click “Search”.

2.2 Instant price displaying

After clicking “Search”, the panel will display the price and related details of the stock. The stock price and related information will be updated upon each time users click the “Search” button.



Figure 2.2.1 – Instant price displaying

2.3 Real Time Indices

After clicking “Real Time Indices”, the panel will display the Indices and related details of the Indices. The Indices and related information will be updated upon each time users click the “Real Time Indices” button.

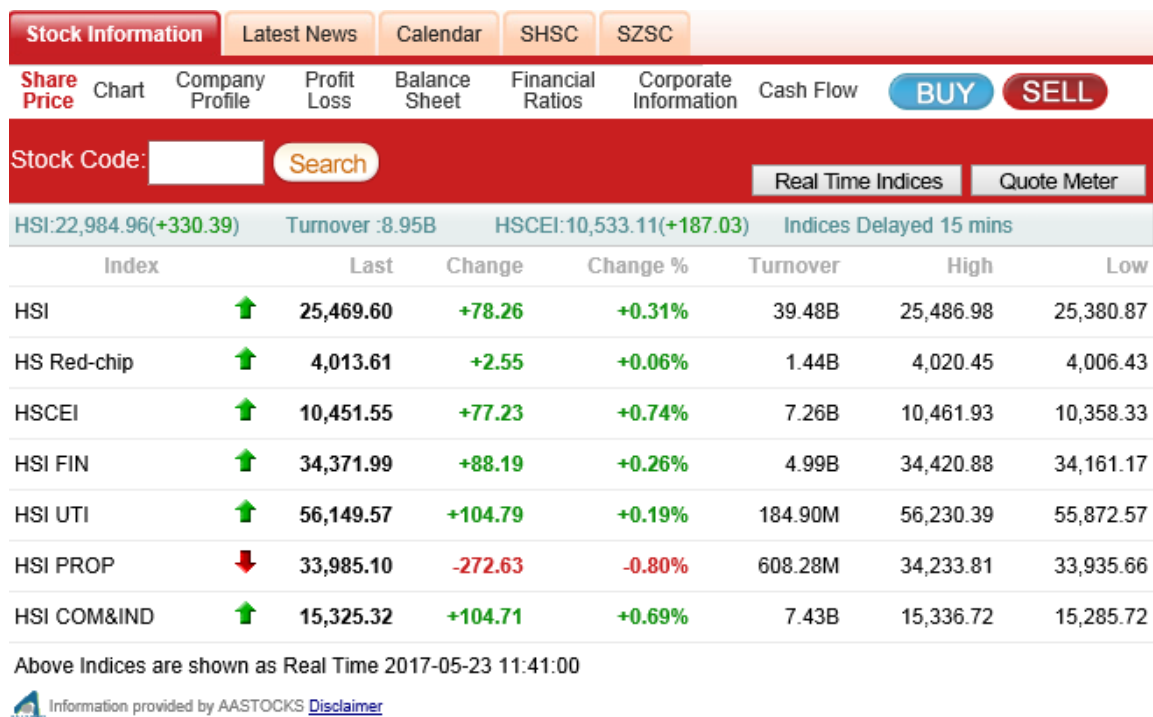



Figure 2.3.1 – Real Time Indices

2.4 Closing Auction Session (CAS) & Volatility Control Mechanism (VCM)

2.4.1

By clicking “”, an information box displaying the details about CAS and VCM Cooling-off Period will be unfolded.

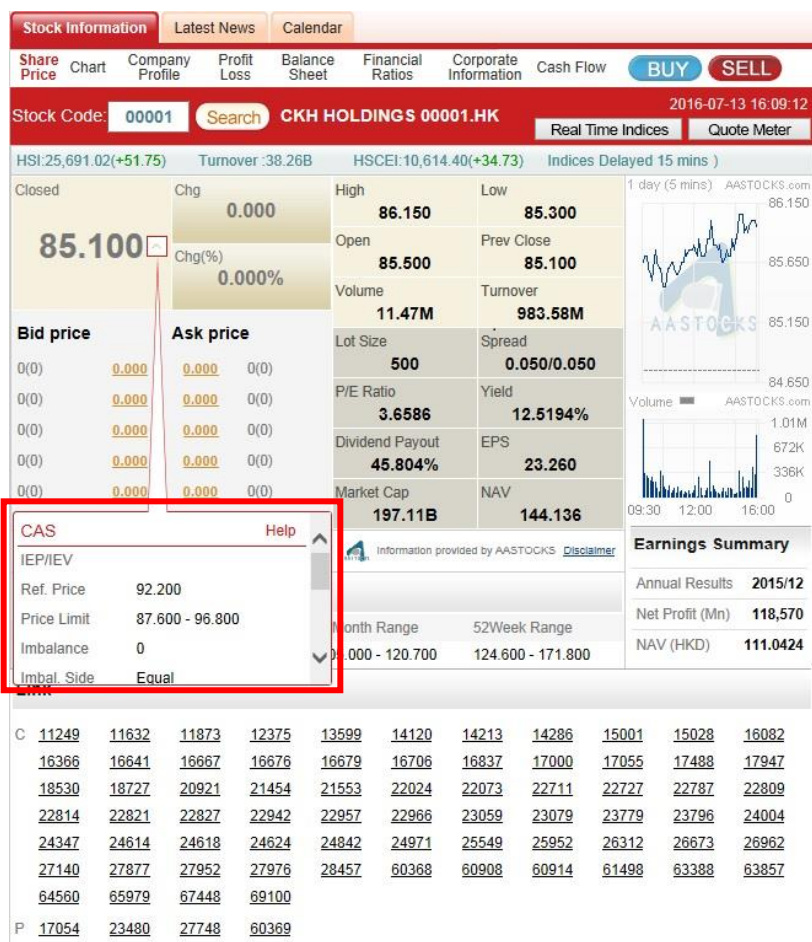


Figure 2.4.1 – CAS & VCM information button

2.4.2

Information box will display relevant details depended on different occasions as below:

Examples of CAS:

(1) Relevant CAS information of the stock

CAS		Help
IEP/IEV		
Ref. Price	92.200	
Price Limit	87.600 - 96.800	
Imbalance	0	
Imbal. Side	Equal	

Figure 2.4.2

(2) The period out of CAS

CAS	Help
Will be started at 16:01.	

Figure 2.4.3

Examples of VCM Cooling-off Period:

(1) Stock has triggered VCM in the Morning and Afternoon Trading Sessions

VCM		Help
Ref. Price	91.000	
Price Limit	82.000 - 100.000	
Period	13:15:00 - 13:20:00	
Ref. Price	90.000	
Price Limit	81.000 - 99.000	
Period	09:45:00 - 09:50:00	

Figure 2.4.4

(2) Stock hasn't triggered VCM

VCM	Help
Not triggered today.	

Figure 2.4.5

If the stock is not applicable for CAS or VCM Cooling-off Period, details will be shown as below:

CAS	Help
Not applicable.	
VCM	Help
Not applicable.	

Figure 2.4.6

2.5 Checking instant price displaying usage

2.5.1

User can check the usage of price displaying by clicking “Quote Meter” button at the top right-hand corner.

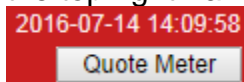


Figure 2.5.1 – Checking instant price displaying usage

2.5.2

After clicking “Quote Meter”, a dialog box will be popped up to show the details including total quotes used, remaining free quotes and chargeable quotes used.

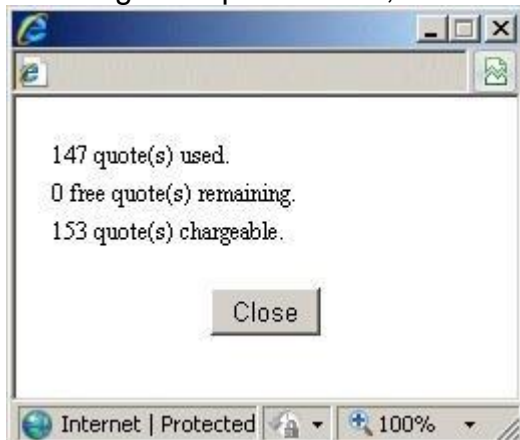


Figure 2.5.2 Usage details

2.5.3

When free quotes remain 10 or below, the dialog box will be popped up each time.

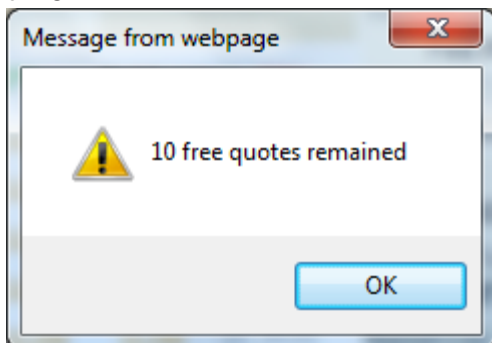


Figure 2.5.3 – Remaining usage

2.5.4

In case free quotes are used up, the dialog box will be popped up with a message "Next quote is chargeable" to remind users.

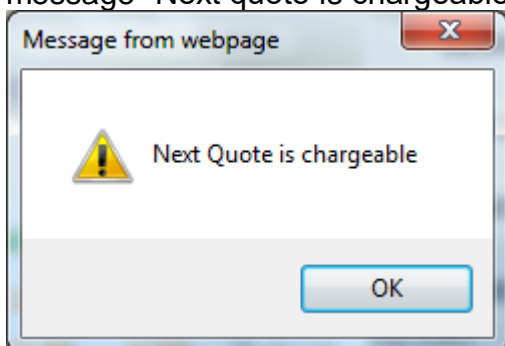


Figure 2.5.4 – "Next Quote is chargeable"

2.6 Quota exceeds free limit

2.6.1

The display panel will show “Chargeable” when the current quote needs to be charged.

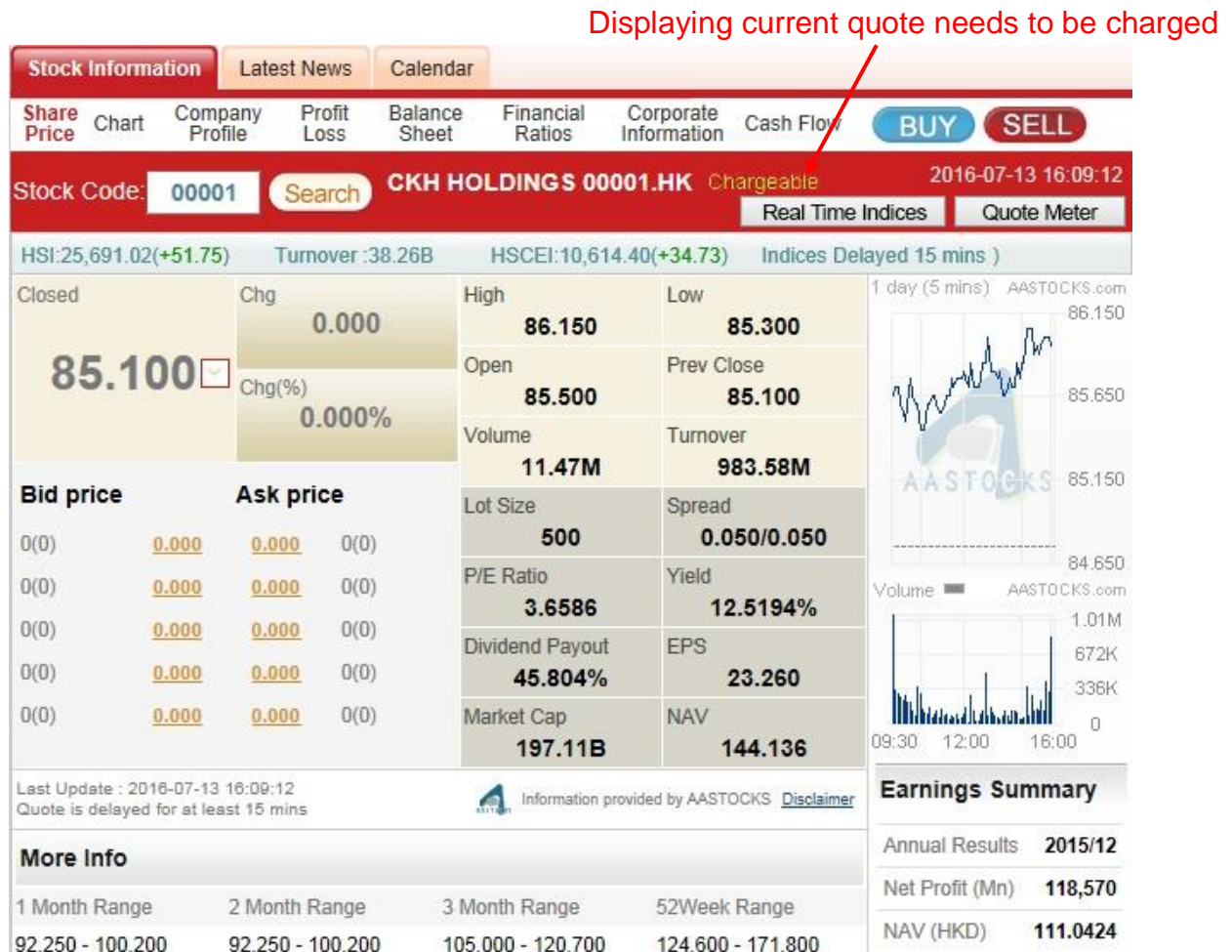


Figure 2.6.1 – Current quote needs to be charged

2.6.2

Users can click “Quote Meter” to check the number of quotes needed to be charged. As shown in the below figure, 3 quotes need to be charged.

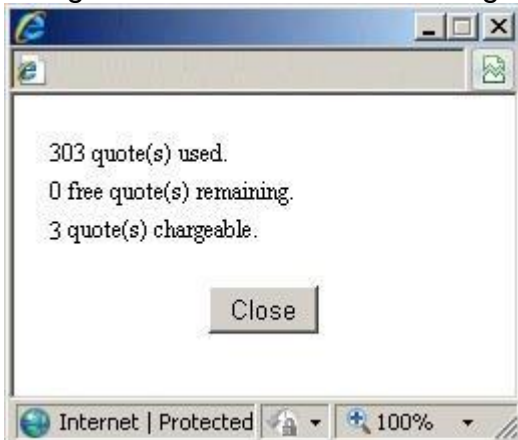


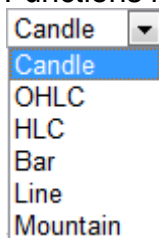
Figure 2.6.2 – Check the number of quotes needed to be charged

3. Chart

Clicking the **Chart** button will display the stock chart that tells you the information about the behavior of the stock prices. (Chart is delayed for at least 15 mins)



3.1 Functions in the stock chart



(a)

At the bottom of the chart, there is a pull down menu for user to select the chart types.

“Candle” – contains the information as bar charts while Red indicates the open price is larger than the close price and Green indicates the open price is smaller than the close price.

“OHLC” – displaying a vertical line to show the price range which contains daily open, high, low and close prices of the stock. The line indicated the opening price on the left, and the closing price on the right.

“HLC” – similar to “OHLC” but only displaying the daily high, low and close prices.

“Bar” – displaying the daily open, high, low, and close prices of the stock.

“Line” – displaying a line graph connecting the close prices at different times.

“Mountain” - mountain charts are the most basic of the available charts as they just connect the dots of all the closing prices.

Daily (6 months) ▼
 5 mins (1 day)
 10 mins (3 days)
 15 mins (5 days)
 30 mins (10 days)
 Daily (1 month)
 Daily (3 months)
 Daily (6 months)
 Daily (1 year)
 Daily (3 years)
 Weekly (6 months)
 Weekly (1 year)
 Weekly (3 years)

(b)

At the bottom, the second pull down menu shows the options of time frequency of the chart. In brief, clicking the above option can show intraday, daily and weekly stock prices.

(c)

Technical Layer I: SMA ▼ 10 20 50
 None
 SMA
 EMA
 WMA
 Parabolic SAR
 Bollinger

Technical Layer II: RSI ▼ 14
 None
 Volume
 RSI
 MACD
 Fast Stockastics
 Slow Stockastics
 MTM
 William %R
 ROC
 OBV
 Turnover
 Turnover+
 DMI
 PVT

Clicking on the specific technical indicator option can show the technical studies that help you to analyze the price movements.

4. Company Profile

Click the **Company Profile** button to view the company's scope of business.

Stock Information		Latest News		Calendar	
Share Price	Chart	Company Profile	Profit Loss	Balance Sheet	Financial Ratios
		Corporate Information	Cash Flow	BUY SELL	
Stock Code: 00023 <input type="button" value="Search"/>					
Bank of East Asia, Ltd. 00023					
Chairman	Li Kwok Po David				
Share Issued (share)	2,262M				
Par Currency	HKD				
Par Value	2.5				
Corporate Profile	<p>Business Summary: The Group belongs to the banking industry, which is mainly engaged in the provision of banking and related financial services, and business, corporate and investor services.</p> <p>Performance for the year: For the year 2012, the Group achieved a record high profit attributable to owners of the parent of HK\$6,056 million, HK\$1,698 million or 39.0%, higher than the HK\$4,358 million earned in 2011. Basic earnings per share were HK\$2.72. Return on average assets and return on average equity were 0.9% and 11.9%, respectively.</p> <p>Business Review: OPERATIONS REVIEW Europe's debt crisis continued to weigh heavily on the global economy in 2012, as recession in Europe reduced demand for imports. In Hong Kong, exports grew by a mere 2.9%. However, signs of recovery started to appear in the fourth quarter, in response to a further round of quantitative easing by the United States Federal Reserve, and the commitment by the European Central Bank to support the weaker members of the European Union through the Outright</p>				

5. Profit Loss

Click the **Profit Loss** button to view the company's Profit Loss - Annual Results in previous five years.

Stock Information Latest News Calendar					
Share Price	Chart	Company Profile	Profit Loss	Balance Sheet	Financial Ratios
		Corporate Information	Cash Flow	BUY	SELL
Stock Code: <input type="text" value="00023"/> <input type="button" value="Search"/>					
Bank of East Asia, Ltd. 00023					
Profit Loss - Annual Results	2012/12	2011/12	2010/12	2009/12	2008/12
Net Interest Income	9,724,000	9,263,000	7,543,000	6,747,000	6,793,000
Other Operating Income	2,006,000	402,000	641,000	1,179,000	-2,481,000
Operating Expenses	8,725,000	7,992,000	6,904,000	6,129,000	5,779,000
Bad Debt Provisions	265,000	135,000	306,000	1,141,000	948,000
Assets Disposal	139,000	140,000	-6,000	108,000	393,000
Operating Profit	6,119,000	4,588,000	3,916,000	2,918,000	-270,000
Exceptional Items	0	0	899,000	206,000	-168,000
Associates	536,000	435,000	341,000	264,000	53,000
Profit Before Taxation	7,565,000	5,751,000	5,150,000	3,496,000	8,000
Taxation	1,411,000	1,300,000	847,000	819,000	-96,000
Minority Interests	98,000	93,000	79,000	73,000	65,000
Net Profit	6,056,000	4,358,000	4,224,000	2,604,000	39,000
Taxation Rate (%)	18.65	22.60	16.45	23.43	N/A
Currency	HKD	HKD	HKD	HKD	HKD
Unit	'000	'000	'000	'000	'000

6. Balance Sheet

Click the **Balance Sheet** button to view the company's Balance Sheet - Annual Results in previous five years.

Stock Information Latest News Calendar					
Share Price	Chart	Company Profile	Profit Loss	Balance Sheet	Financial Ratios
Corporate Information Cash Flow BUY SELL					
Stock Code: <input type="text" value="00023"/> <input type="button" value="Search"/>					
Bank of East Asia, Ltd. 00023					
Balance Sheet - Annual Results	2012/12	2011/12	2010/12	2009/12	2008/12
Fixed Assets	12,552,000	12,639,000	12,414,000	11,467,000	9,146,000
Investments	96,235,000	75,580,000	72,103,000	56,851,000	33,619,000
Current Assets	579,143,000	518,591,000	445,078,000	361,307,000	369,568,000
Other Assets	4,184,000	4,592,000	4,598,000	4,457,000	3,035,000
Total Assets	692,114,000	611,402,000	534,193,000	434,082,000	415,368,000
Other Liabilities	65,081,000	58,205,000	45,187,000	32,775,000	26,361,000
Current Liabilities	565,394,000	501,153,000	440,363,000	361,572,000	356,338,000
Share Capital	5,568,000	5,190,000	5,105,000	4,623,000	4,183,000
Reserves	51,585,000	42,426,000	39,138,000	30,754,000	28,147,000
Equity	57,153,000	47,616,000	44,243,000	35,377,000	32,330,000
Currency	HKD	HKD	HKD	HKD	HKD
Unit	'000	'000	'000	'000	'000
Major Items	2012/12	2011/12	2010/12	2009/12	2008/12
Bill Receivable	55740000	46891000	18548000	1847000	1164000
Liquid Funds	436,430,000	430,350,000	406,400,000	37,657,000	404,670,000

8. Corporate Information

Click the **Corporate Information** button to view the company's information.

Stock

Latest News

Calendar

SHSC

SZSC

Share Price

Chart

Company Profile

Profit Loss

Balance Sheet

Financial Ratios

Corporate Information

Cash Flow

BUY

SELL

Stock Code:

00023

Search

Bank of East Asia, Ltd. 00023

Substantial Shareholders	Criteria Caixa, S.A., Sociedad Unipersonal(17.30%) GUOCO MANAGEMENT COMPANY LIMITED(14.15%) Sumitomo Mitsui Banking Corporation (19.01%) Elliott Capital Advisors, L.P. (8.54%)
Directors	David LI Kwok-po (Chairman and Executive Director) Arthur LI Kwok-cheung (Vice-Chairman and Non-Executive Director) Allan WONG Chi-yun (Vice-Chairman and Independent Non-Executive Director) Adrian David LI Man-kiu (Deputy Chief Executive and Executive Director) Brian David LI Man-bun (Deputy Chief Executive and Executive Director) Aubrey LI Kwok-sing (Non-Executive Director) Winston LO Yau-lai (Non-Executive Director) Stephen Charles LI Kwok-sze (Non-Executive Director) Daryl Ng Win-kong (Non-Executive Director) Masayuki OKU (Non-Executive Director) Francisco Javier SERRADO TREPAT(Non-Executive Director) Rita FAN HSU Lai-tai (Independent Non-Executive Director) Meocre LI Kwok-wing (Independent Non-Executive Director) Henry TANG Ying-yen (Independent Non-Executive Director) Delman LEE (Independent Non-Executive Director) William Junior Guilherme DOO (Independent Non-Executive Director) David MONG Tak-yeung(Independent Non-Executive Director)

9. Cash Flow

Click the **Cash Flow** button to view the company's Cash Flow - Annual Results in previous five years.

Stock Information

Latest News

Calendar

Share Price

Chart

Company Profile

Profit Loss

Balance Sheet

Financial Ratios

Corporate Information

Cash Flow

BUY

SELL

Stock Code:

00023

Search

Bank of East Asia, Ltd.

00023

Cash Flow - Annual Results	2012/12	2011/12	2010/12	2009/12	2008/12
Net Cash Flow from Operating Activities	4,928,000	-14,018,000	20,030,000	-33,583,000	-8,294,000
Net Cash Flow from Return on Investments & Servicing of Finance	-2,187,000	-1,814,000	-1,950,000	-856,000	4,569,000
Interest Received	0	0	0	0	17,514,000
Interest Paid	-1,437,000	-863,000	-523,000	-614,000	-11,501,000
Dividend Received	182,000	206,000	144,000	236,000	306,000
Dividend Paid	-932,000	-1,157,000	-1,571,000	-478,000	-1,750,000
Others	0	0	0	0	0
Taxes (Paid) / Refunded	-796,000	-886,000	-563,000	-580,000	-526,000
Net Cash Flow from Investing Activities	473,000	359,000	-1,379,000	-4,143,000	-2,625,000
Additions to Fixed Assets	-474,000	-585,000	-889,000	-2,561,000	-2,854,000
Disposal of Fixed Assets	505,000	519,000	56,000	50,000	213,000
Increase in Investments	-788,000	-681,000	-1,504,000	-904,000	-547,000